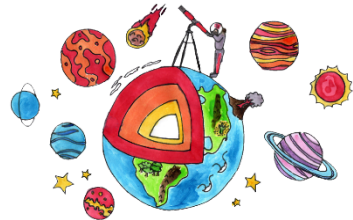


Year 5: Summer 2026

Core Values:

- Learning to co-operate well with others and to resolve conflict effectively.
- Investigating and discussing moral issues and consequences of actions.
- Learning about the world around us and reflecting on our experiences.
- Understanding our cultural heritage and respecting our cultural diversity.



Explorers: Earth and Space

Rationale: Science Focus: Earth and Space and Forces

We will be finding out about some of the greatest modern-day explorers and their adventures on Earth and in space. Children will learn that the Earth is part of the solar system and that the Sun is at the centre of that system. They will learn the names of the other planets (based on their distance from the Sun) and be able to describe the movement of Earth (and other planets) in relation to the Sun. Children will discover why there is day and night on Earth and relate this to time. They will plan an investigation to answer the question - what happens to the Sun during the daytime? Children will also gain an understanding of the phases of the Moon and be able to describe the Moon's movement in relation to the Earth.

Focus Area: English

Through reading *Curiosity* by Markus Motum children will explore the themes of exploration and discovery and what it means to be curious. Children will follow the journey of the NASA rover Curiosity as it makes its way to Mars. Children will draw together their learning to design a new rover and write an expanded explanation to propose it as the future of NASA exploration.

Through reading *Brightstorm* by Vasthi Hardy, the children will embark on a faced-paced adventure that will set their imaginations soaring. They will work to produce a variety of writing in different styles including an explorers journal and an explanation

Supporting Focus Area: Geography - Locational Knowledge

Pupils will learn to identify the position and significance of latitude, longitude, Equator, Northern Hemisphere, Southern Hemisphere, the Tropics of Cancer and Capricorn, Arctic and Antarctic Circle, the Prime/Greenwich Meridian and time zones (including day and night), in accordance with the National Curriculum.

PSHE - Physical health and wellbeing.

- how sleep contributes to a healthy lifestyle
- how to manage risk in relation to sun exposure, including skin damage and heatstroke health and how allergies can be managed
- that some diseases can be prevented by vaccinations and immunisations
- that bacteria and viruses can affect health
- the spread of bacteria and viruses can be prevented with everyday hygiene routines

Discrete Teaching Programmes:

Maths - Daily Maths lessons.

PE - Sailing, Rugby, Tennis, Athletics

Supporting Focus Area: Art and the Cosmic Connection

"Art and the Cosmic Connection" is a program that introduces students to the solar system using art concepts. It uses the elements of art to help students understand and analyze beautiful NASA images from space.

Study the work of the space artist Peter Thorpe and produce our own pieces inspired by him.

Homework Task: Choose a well-known, worldwide astronaut; research about the person and present either as a slide show or on paper to the class.