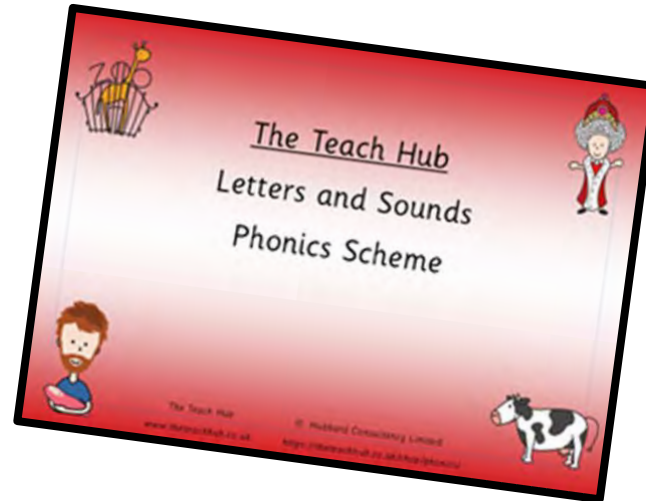


# The Teach Hub Letters and Sounds Programme

---

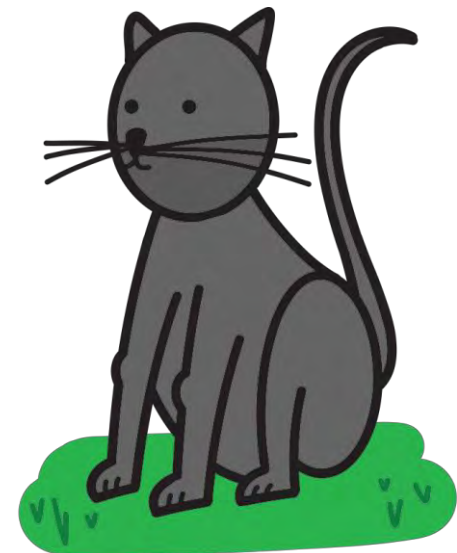
Information  
for Parents



# Learning to Read and Spell with a Synthetic Systematic Phonics Programme



# What is Synthetic Phonics?

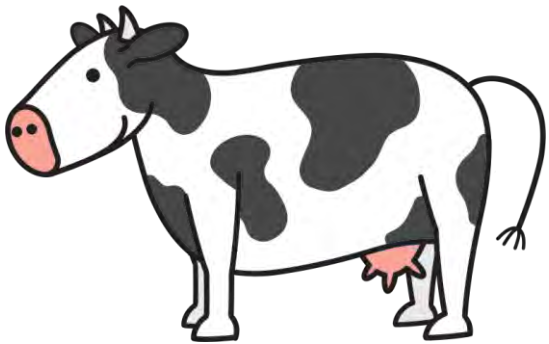


It is a method of teaching reading by linking sounds with written letters in a set order.



The sounds are taught in groups of about 4 a week.

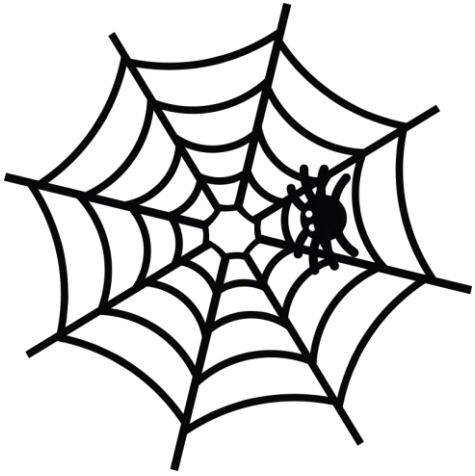
The children are taught phonics every day in Early Years and Key Stage One.



The children are taught to read  
and spell using the learned  
sounds.



The sounds are also  
constantly revised and  
added to when appropriate.



The children will learn terms  
such as these:  
phoneme  
digraph  
split digraph  
grapheme



The children will learn terms such as these:

## phoneme

A phoneme is the smallest unit of sound that signals a distinct, contrasting meaning.

e.g. /t/ contrasts with /k/ to signal the difference between tap and cap



# grapheme

A grapheme is a letter, or combination of letters, that corresponds to a single phoneme within a word.

The graphemes s and ss in the word sat and hiss corresponds to the phoneme /s/.



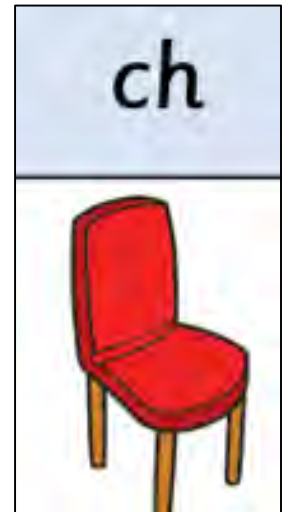
The grapheme ph in the word dolphin corresponds to the phoneme /f/.



# digraph

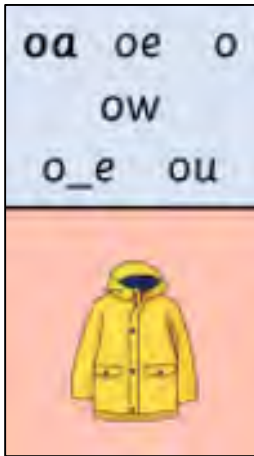
A digraph is a type of grapheme where two letters represent one phoneme.

The grapheme **ai** in the word paint corresponds to the phoneme **/ai/**.

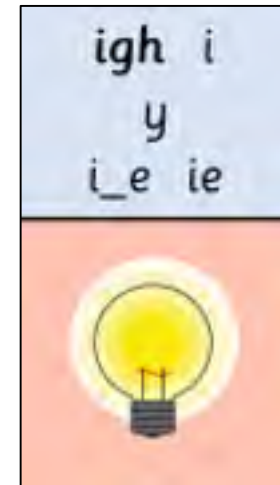


# split digraph

Sometimes, these two letters are not next to one another; this is called a split digraph.



bone



bike




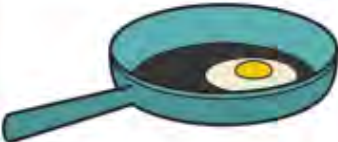




These are the first four letters that the children learn.

Phonics Chart 1 Phase 2 Reception

©Hubbard Consultancy Limited [www.theteachhub.co.uk](http://www.theteachhub.co.uk)



s	a	t	p	i	n
					

We ensure they say the sounds correctly without an extra 'uh' on the end.



Phase 2 sounds and actions.

[Click here](#)

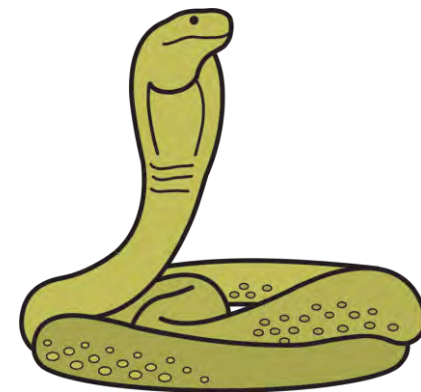


Upper case s  
Capital letter

Lower case s

We teach the correct formation of both the capital and the lower case letters.



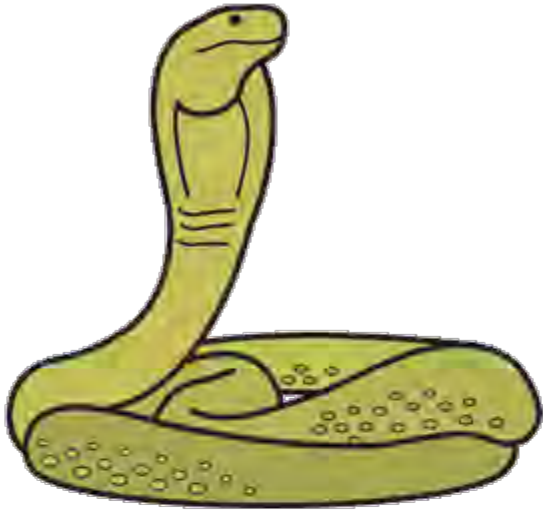


Round from his head to his toes



Use this action or mime to help you to remember the letter.

These words start with the letter s.



Wavy shape in the air  
with two fingers in  
front

S

snake sat sit sip sun



s

ss

The children then learn these sounds in order.

k

ck

j

They will learn to blend the sounds together to read them and also to segment them to spell them.

ng



s	ss	a	t	p	i	n	m	d	g	o	c	k	ck
---	----	---	---	---	---	---	---	---	---	---	---	---	----

e	u	r	h	b	f	ff	l	ll
---	---	---	---	---	---	----	---	----

j
---

ng
----

By the end of Reception, the children should be able to read and spell these sounds.



Blend to read

yam

fox

yet

jam

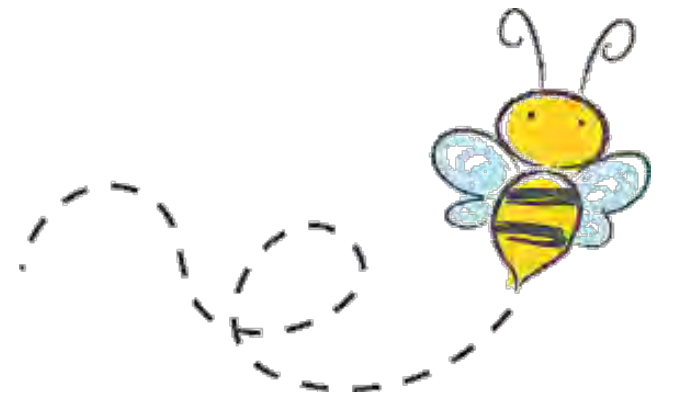
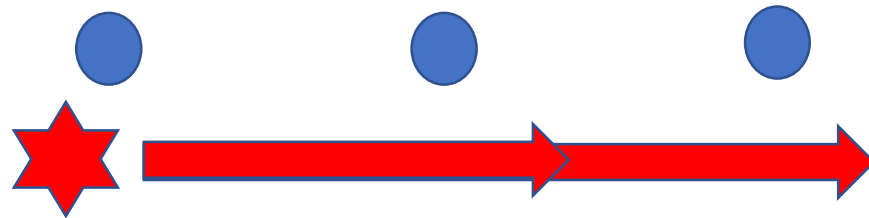
yak

vet



# Segment to Spell

b	u	zz
---	---	----



# Segment to Spell



quack

qu	a	ck
----	---	----



The children's reading book will be phonetically decodable according to the Phase they are on.



It is crucial that the children practise reading the taught graphemes in their reading books. They should repeatedly read their books several times until they are confident.



# Decodable Texts

Use phonic decodable texts to teach from:

Phase 2 (pink):

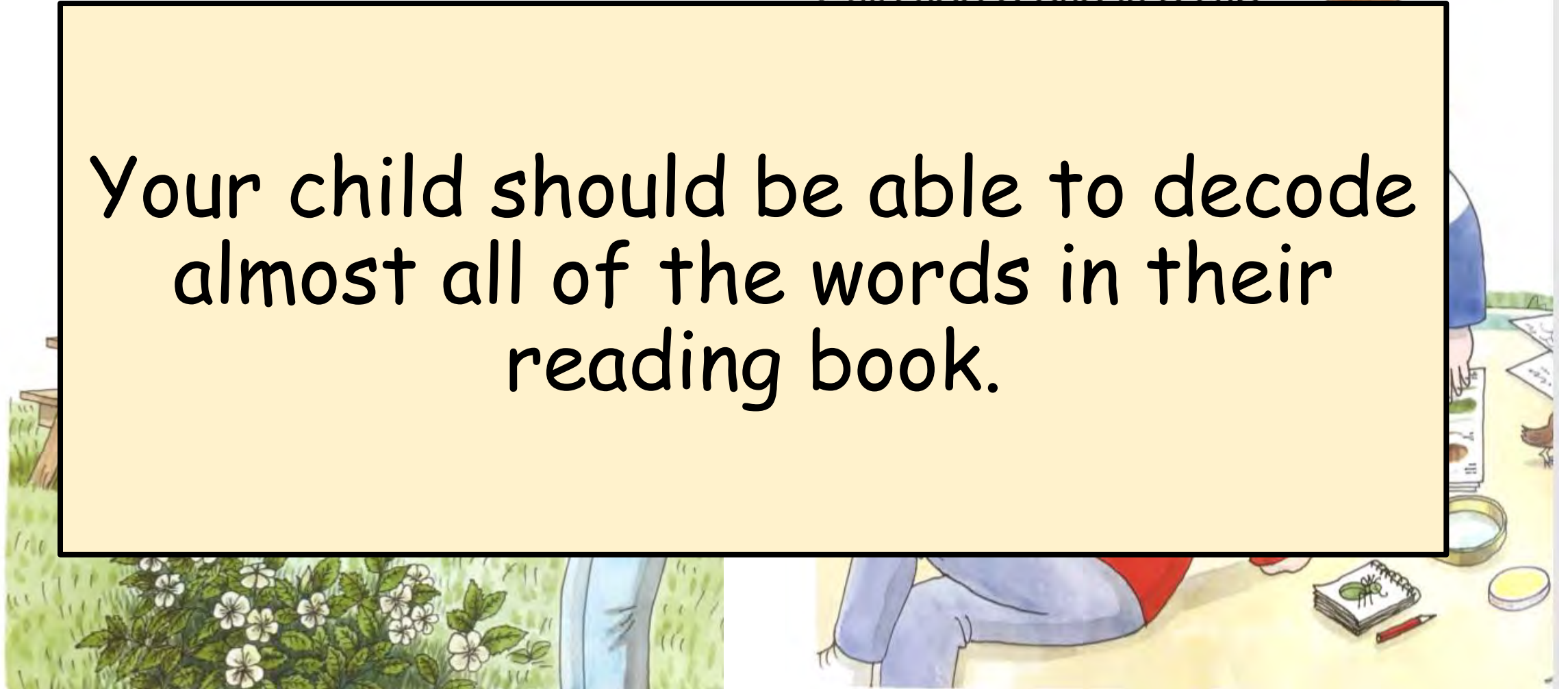


Chip had a bug.

Biff had a bug in a bag.

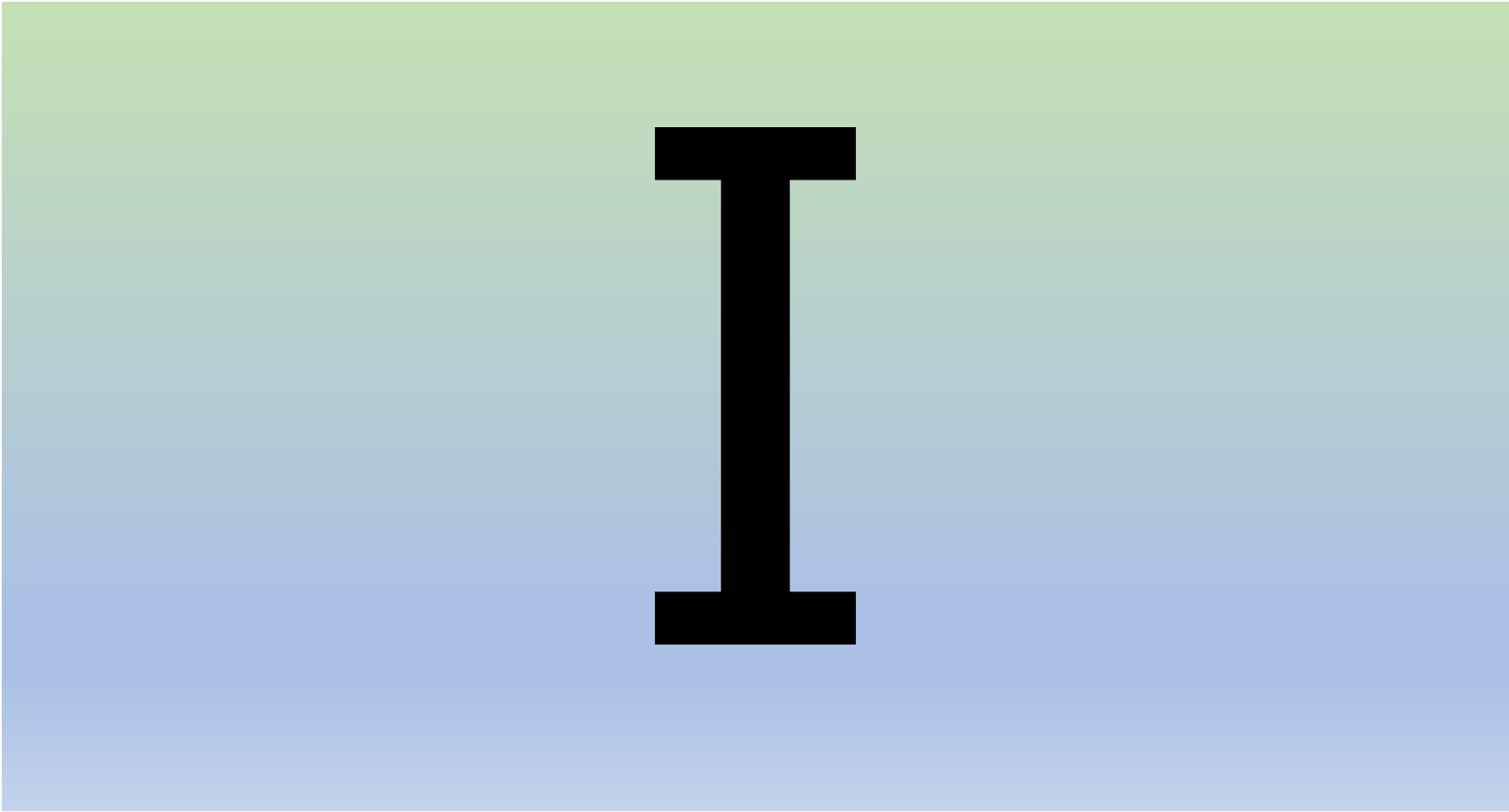
Chip had a bug in a cup.

Your child should be able to decode almost all of the words in their reading book.



The high frequency words are also taught in order. These words will be taught as automatic recognition as they will not be able to decode them - yet!





to



the



no



go



# Phase 2 Decodable words.



Decodable words

a

as

at

an



In Year One, the children learn how to read and spell sounds using different spellings and pronunciations.



They learn these gradually, starting with the ones they already know.



We can read

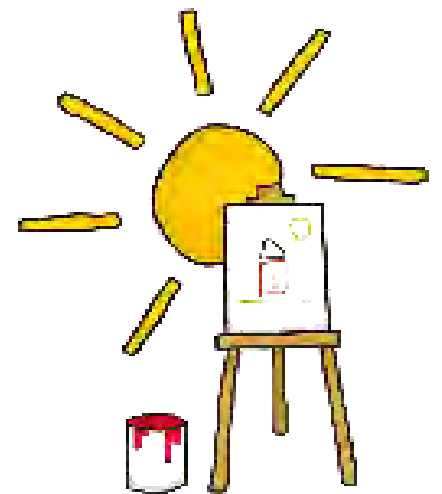
ai as in paint



Today we are learning to read

ay as in day

Painting in the day



Year One Reading Graphemes

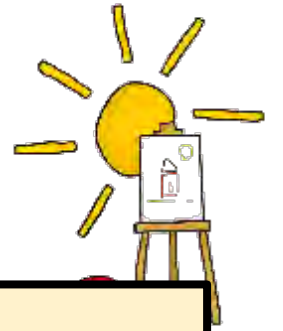
(sample)

Year One Spelling Graphemes

(sample)

These are taught in order, starting with the most common ones.

# Blend to read



play tray day

S

The children practise blending the sounds together to practise reading using sounds they know.

spray sway today



# Segment to Spell using Sound Buttons

The sound buttons help the children to use the graphemes to spell out and segment words.

ai

n

ee

s

c

igh

ar

l

r

oo

air





troo  
trou



plee  
plau



brown  
breen



dai  
doo

The children will learn which is the correct way to spell the word, with repeated reading and practise.

speen  
spain  
spoon

bay  
bai  
bee

swong  
sweng  
swing

sprag  
sprai  
sproi



In Year Two and Key Stage Two,  
the children will learn further  
Reading and Spelling Graphemes  
covering the National Curriculum.

Your child will constantly revisit and revise the phonics they have been taught.

They will gradually be able to become confident, fluent readers and spellers.

*Any questions?*



Facebook: Whole Class Reading and more at **The Teach Hub**

Website: [www.theteachhub.co.uk](http://www.theteachhub.co.uk)

**Credits**

[reshot.com](http://reshot.com)

[pixabay.com](http://pixabay.com)

[maxpixel.net](http://maxpixel.net)

[publicdomainpictures.net](http://publicdomainpictures.net)

[flickr.com](http://flickr.com)

[commons.wikimedia.org](http://commons.wikimedia.org)

[unsplash.com/license](http://unsplash.com/license)

[pxhere.com](http://pxhere.com)

[defense.gov](http://defense.gov)