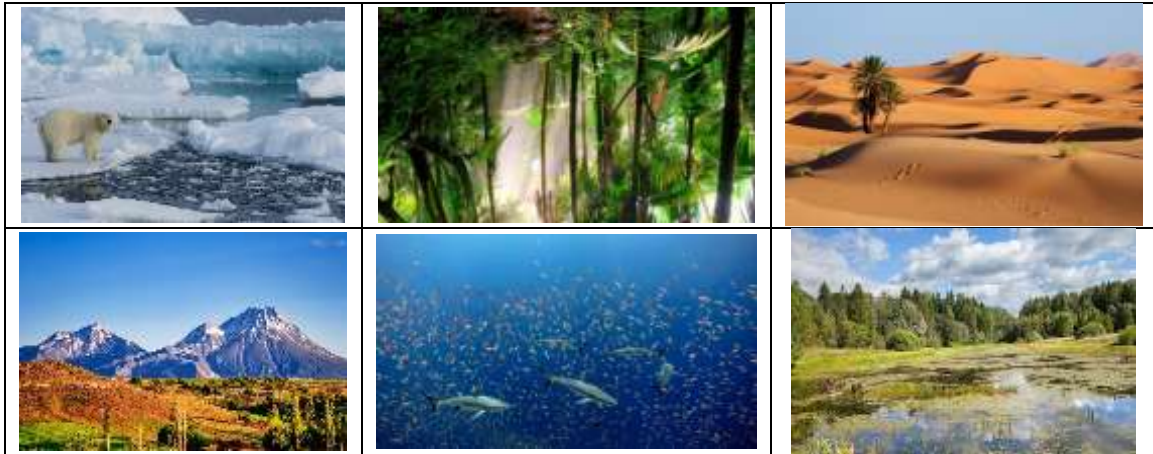


Year 2 Science Activities - Summer Term, Week 1 - 20.04.2020

To link with our topic on Darwin, we are going to continue to investigate habitats.
Can you remember what a habitat is? It is a place or area where animals and plants live.

In the Autumn Term we investigated habitats around the world and found out about some of the animals and plants that live with different temperatures, weather and geographical features, such as mountains or oceans, in a range of environments.

Can you name these world habitats? (See below for clues).



We also thought about different habitats in this country,
such as coastal areas, woodland, towns and ponds.



Task: This week we'd like you to draw a map of a habitat local to you, that you know well. It could be a few streets around your home, near the park or the seafront, or it could be somewhere in the countryside you have been with your family.

We would like you to draw the streets, paths or buildings and any trees or plants you have seen there. Then draw the creatures that would live in this habitat.

Don't forget to label what you have drawn.

Can you add a compass to show which way is north on your map?



To help you, before you start your map, you could watch the Local Habitats powerpoint we used in class, which is in the Year 2 section of the Queensgate website and you could look on Google maps to find your chosen area and see it as an aerial image or as part of a street plan.

Clues: Which is the - ocean, rainforest, arctic, desert, mountains?

Did you remember the last one? It is the temperate region. Great Britain is in a temperate region.