



# Geography

## Raging Rivers

# Features of a River



# Aim

- I can describe the key features of a river system.

## Success Criteria

- I can tell you some of the features of a river's upper course.
- I can tell you some of the features of a river's middle course.
- I can tell you some of the features of a river's lower course.
- I can compare the features of a river at different points along its course.

# The Life of a River



## Activity

Tell your partner the life story of a river.

- Where might it be born?
- What kinds of places and events might it see along its life journey?
- Where does its life end?



# The Life of a River



Do you know what any of these words mean?

- upper course
- middle course
- lower course
- valley
- channel
- waterfall
- rapids
- gorge
- meander
- tributary
- confluence
- floodplain
- levee
- delta
- estuary





# The Life of a River



Rivers can be divided into three stages:

## The Upper Course

Rain falling in highland areas flows downwards and collects in channels, forming a stream. As the stream continues to run downhill, it is joined by other streams and increases in size and speed. The point where two rivers join is called a confluence.

## The Middle Course

As a river reaches its middle course, the fast flowing water causes erosion, which makes it deeper and wider. The river erodes left and right, forming horse-shoe like loops called meanders.

## The Lower Course

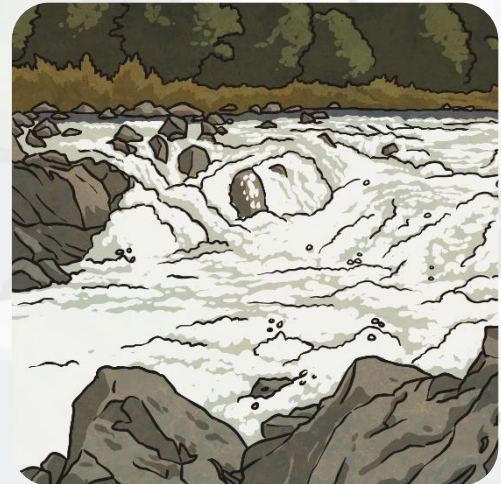
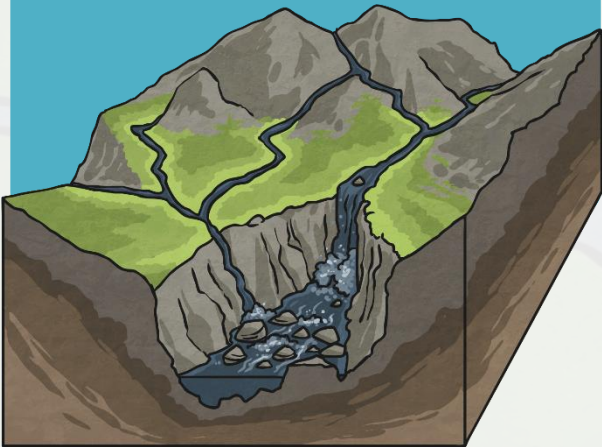
In the lower course, a river is in flatland and flows slowly. The force of the water is lower than in the other stages, so the river deposits all the bits of eroded land it has been carrying with it.

# The Upper Course



What is the river like along its upper course?

- Speed
- Features
- Valley shape
- Channel width



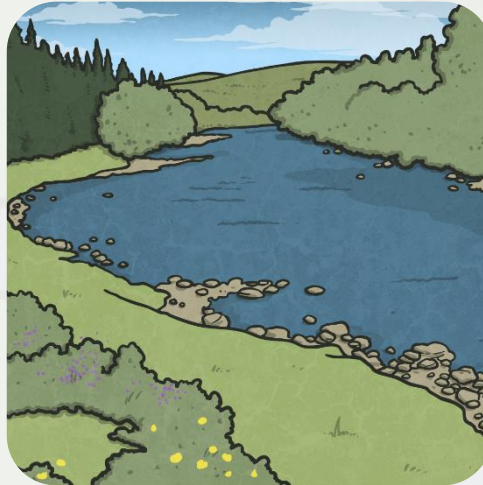
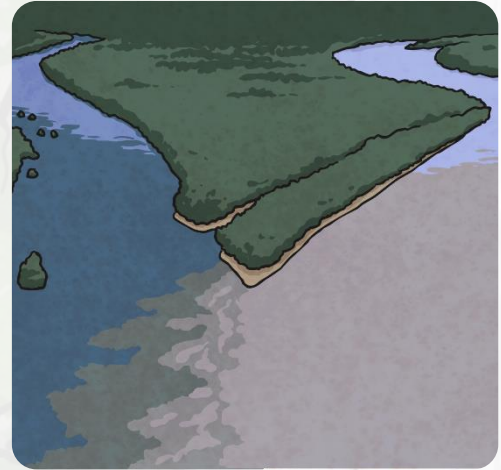


# The Middle Course



What is the river like along its middle course?

- Speed
- Features
- Valley shape
- Channel width



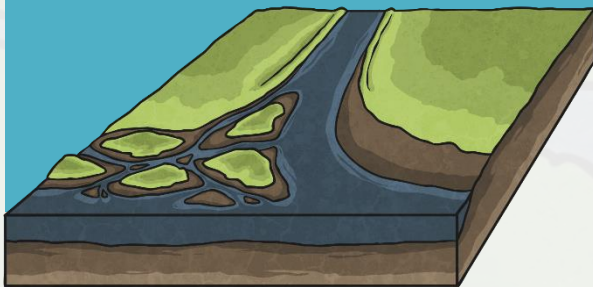


# The Lower Course



What is the river like along its lower course?

- Speed
- Features
- Valley shape
- Channel width



# River Features



## Activity

Use the features of rivers vocabulary to label the river system.

**Challenge:** can you describe the river during the upper, middle and lower courses? How does it change?



Three overlapping worksheets titled "River Features" are shown, each with a diagram of a river system and a word bank for labeling.

The top worksheet has a star icon and a title box. Below the title is a diagram of a river system with labels pointing to various features. The text below the diagram says: "Use the labels at the bottom of the page to identify each of the parts of the river system."

The middle worksheet has two star icons and a title box. Below the title is a diagram of a river system with labels pointing to various features. The text below the diagram says: "Use the word bank at the bottom of the page to identify each of the parts of the river system."

The bottom worksheet has three star icons and a title box. Below the title is a diagram of a river system with labels pointing to various features. The text below the diagram says: "Label each of the parts of the river system."

The word bank at the bottom of the middle worksheet includes the following terms: channel, meander, confluence, mouth, delta, oxbow lake, estuary, source, floodplain, and waterfall.



# What's the River like There?



Where along a river's course might you find each feature?

Some words might go in more than one column!

Upper Course	Middle Course	Lower Course
valley channel waterfall rapids gorge tributary confluence	valley channel tributary confluence meander	valley channel floodplain levee delta estuary

- valley
- channel
- waterfall
- rapids
- gorge
- meander
- tributary
- confluence
- floodplain
- levee
- delta
- estuary

# Aim



- I can describe the key features of a river system.

## Success Criteria

- I can tell you some of the features of a river's upper course.
- I can tell you some of the features of a river's middle course.
- I can tell you some of the features of a river's lower course.
- I can compare the features of a river at different points along its course.



