

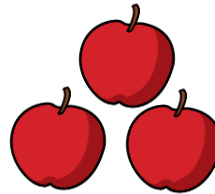
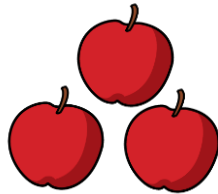
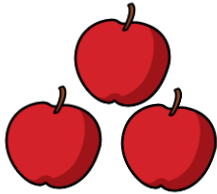
MAKE EQUAL GROUPS – GROUPING



GET READY



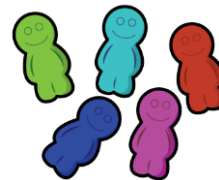
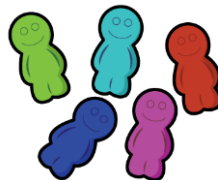
Complete the sentences below.



1) There are _____ groups of _____ apples.

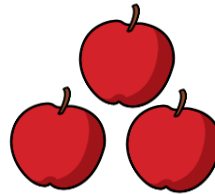
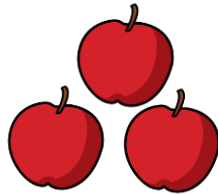
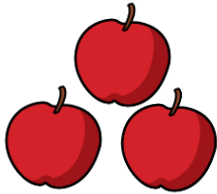


2) There are _____ groups of _____ flowers.



3) There are _____ groups of _____ sweets.

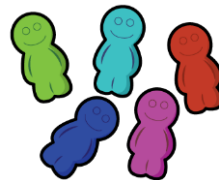
Complete the sentences below.



1) There are 3 groups of 3 apples.



2) There are 4 groups of 2 flowers.

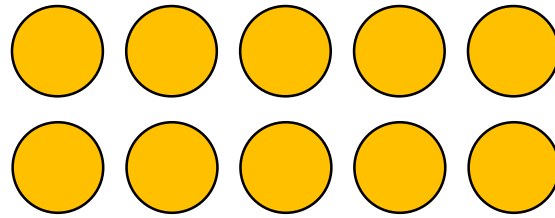


3) There are 3 groups of 5 sweets.

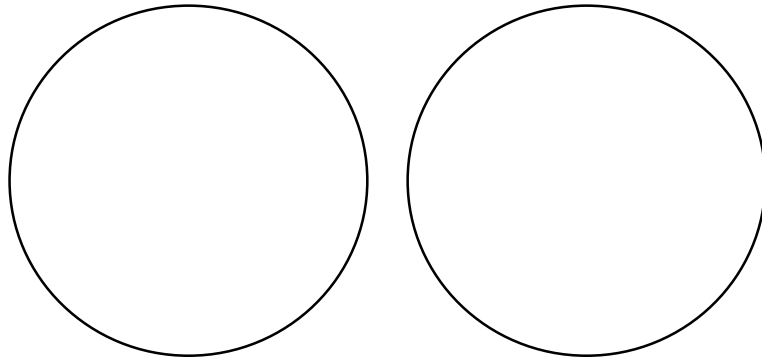
LET'S LEARN



$$10 \div 2$$

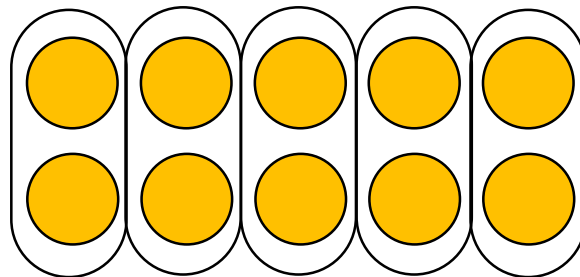


Sharing



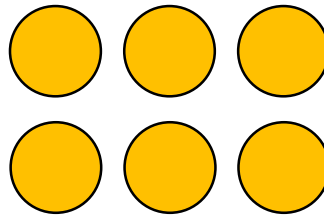
$$10 \div 2 = 5$$

Grouping



$$10 \div 2 = 5$$

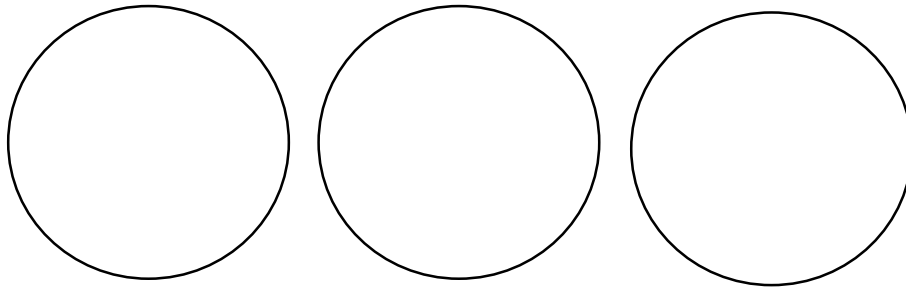
$$6 \div 3$$



Have a think

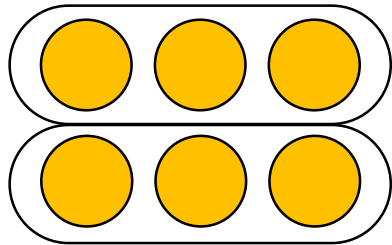


Sharing



$$6 \div 3 = 2$$

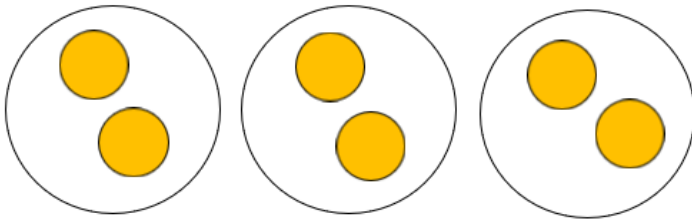
Grouping



$$6 \div 3 = 2$$

$$6 \div 3$$

Sharing

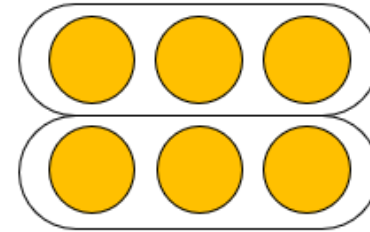


$$6 \div 3 = 2$$



How many
groups we are
sharing between

Grouping



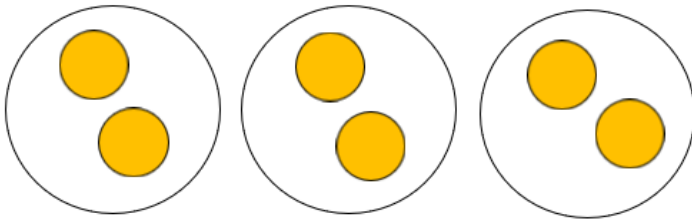
$$6 \div 3 = 2$$



How many in
each group

$$6 \div 3$$

Sharing

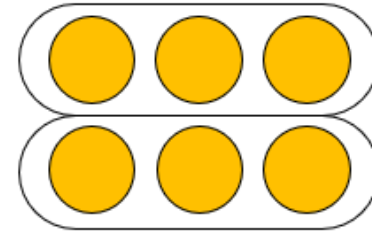


$$6 \div 3 = 2$$



How many are in
each group

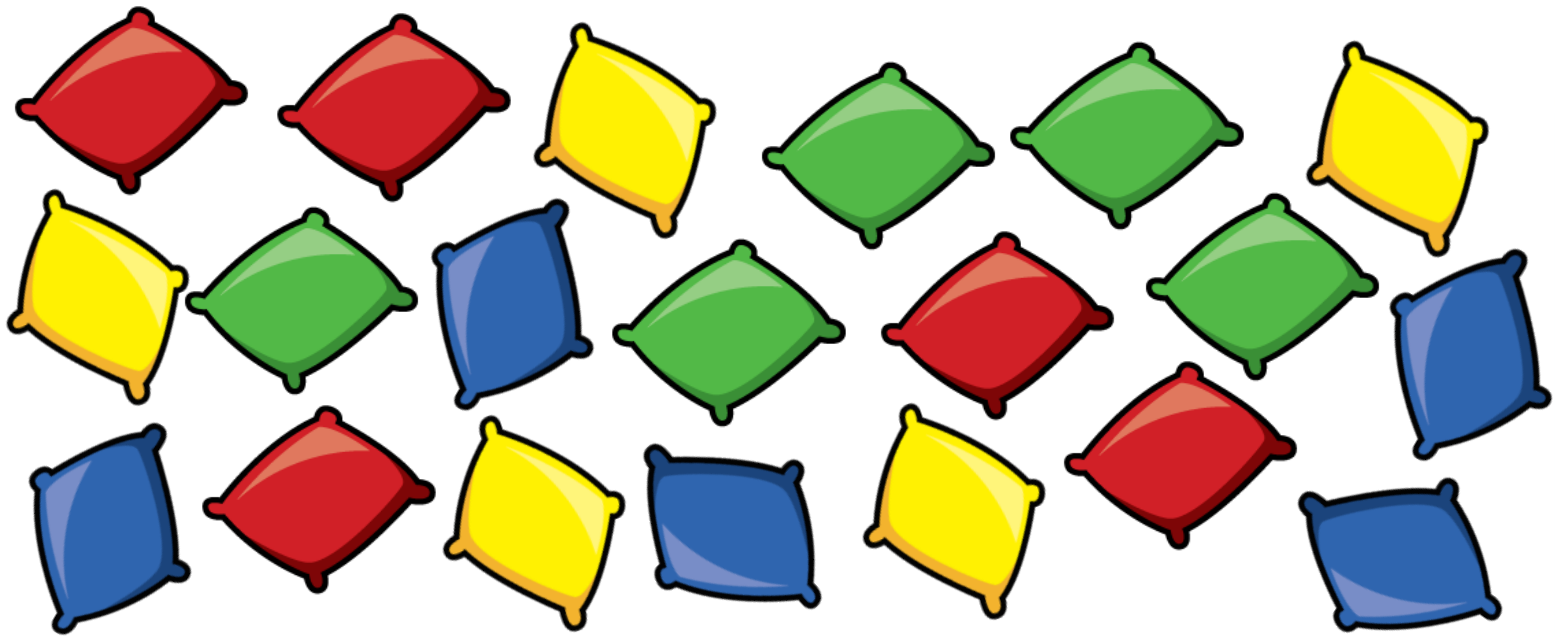
Grouping



$$6 \div 3 = 2$$



How many
groups we can
make



How many groups of 10 can you make?

How many groups of 5?

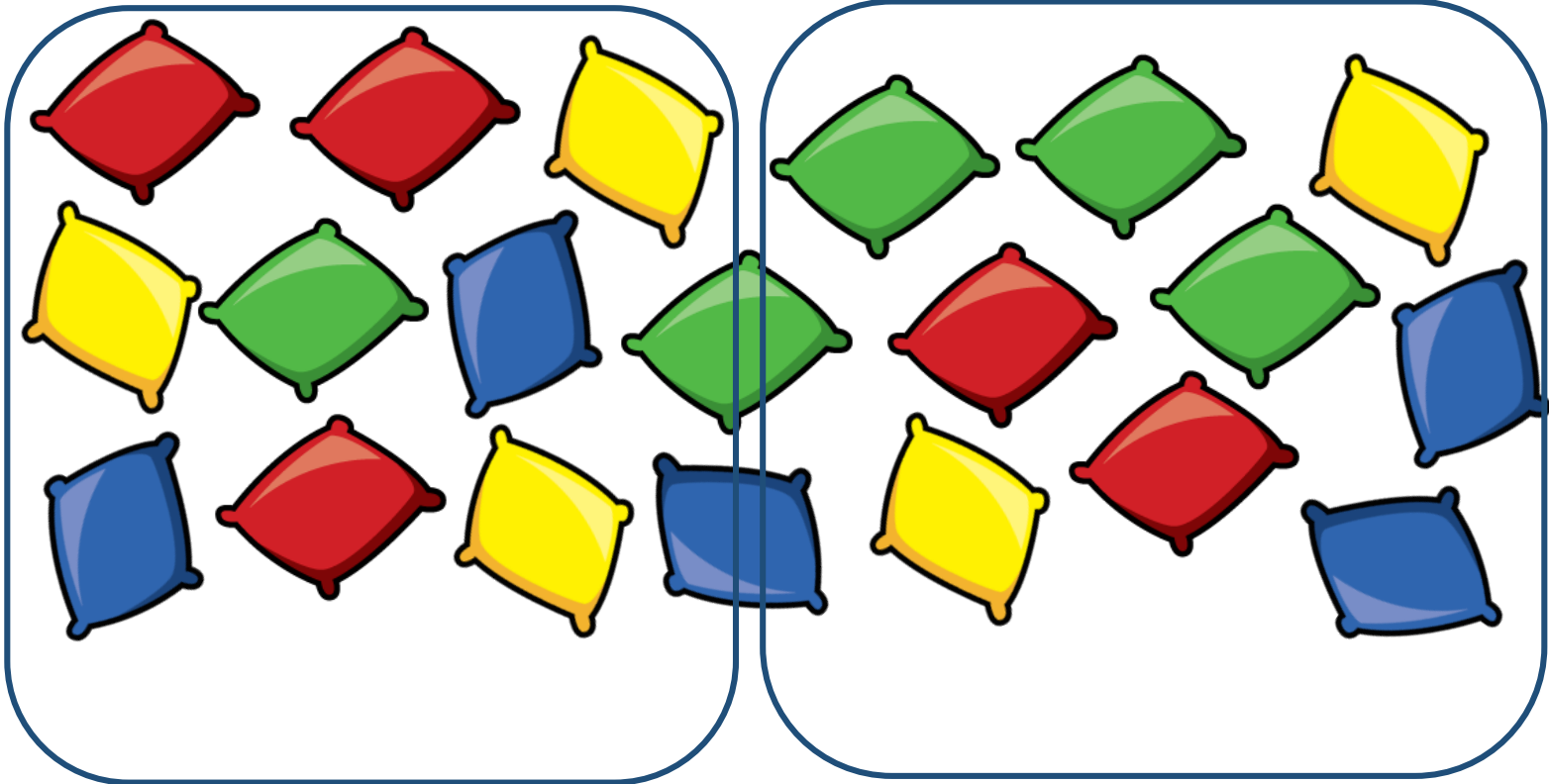
How many groups of 4?

How many groups of 2?

How many groups of 1?

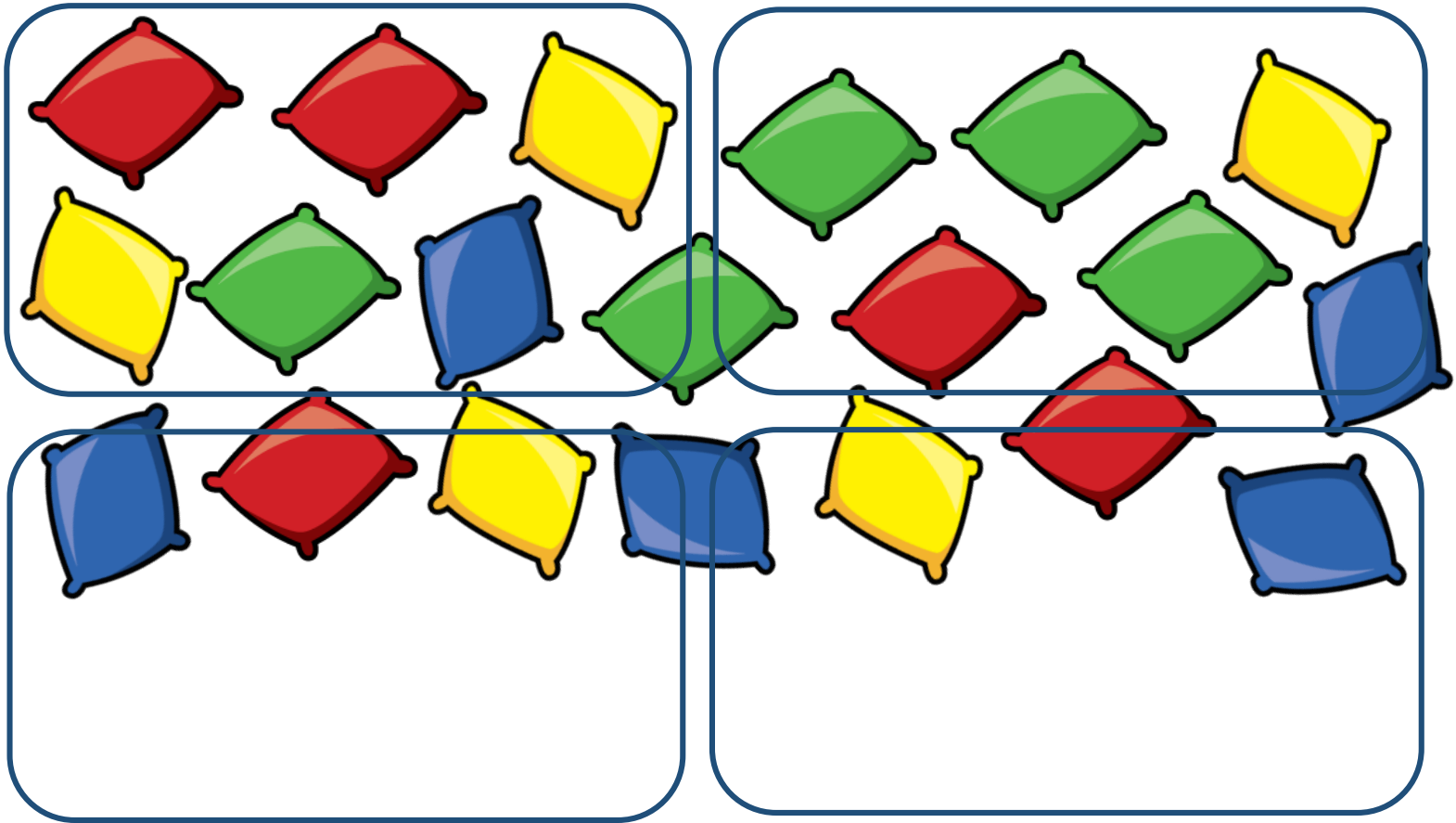
Have a think





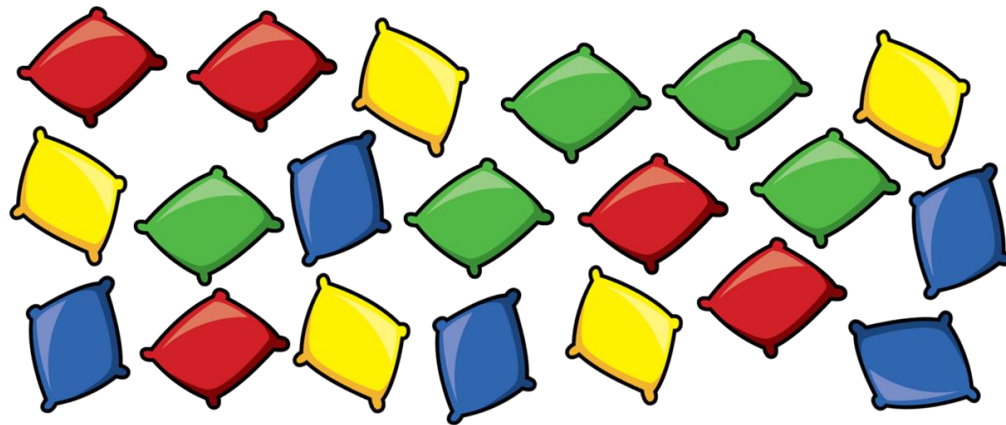
2 groups of 10

$$20 \div 10 = 2$$



4 groups of 5

$$20 \div 5 = 4$$



5 groups of 4

$$20 \div 4 = 5$$

10 groups of 2

$$20 \div 2 = 10$$

20 groups of 1

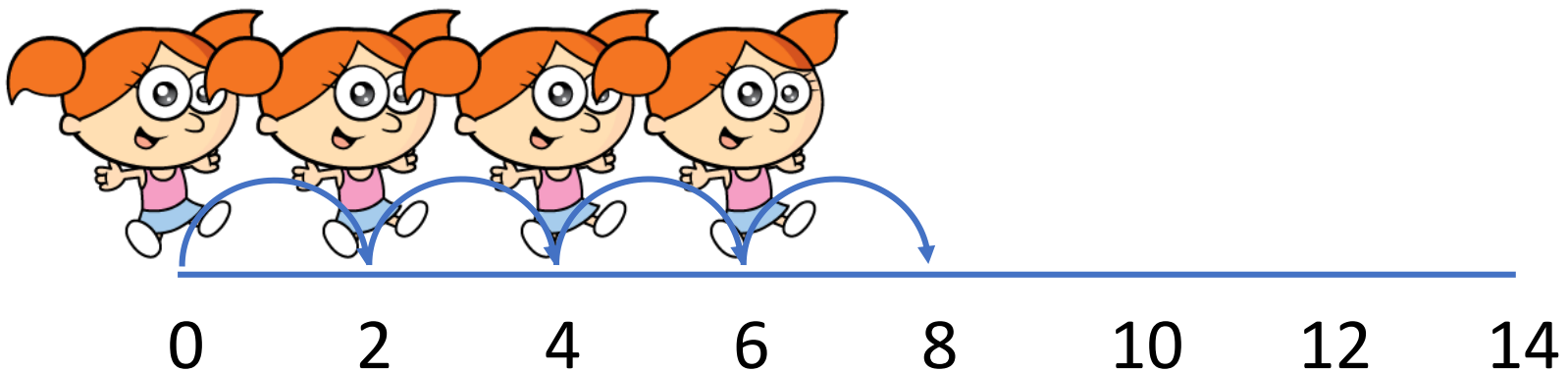
$$20 \div 1 = 20$$

YOUR TURN

Have a go at questions
1 - 3 on the worksheet



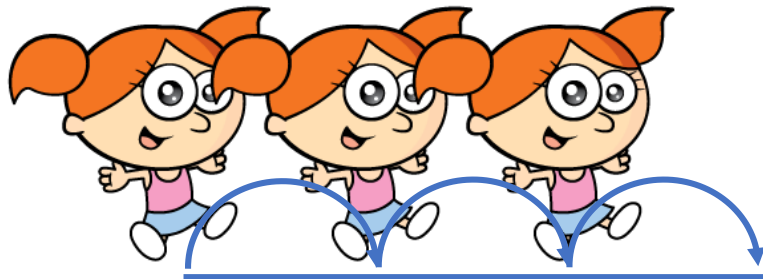
$$8 \div 2 = 4$$



4 jumps of 2 are equal to 8

$$15 \div 5 = 3$$

Have a think

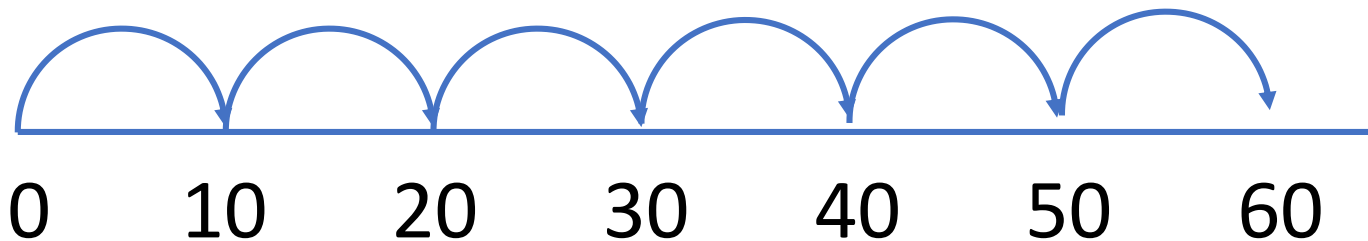


0 5 10 15 20 25 30 35

3 jumps of 5 are equal to 15

$$60 \div 10 = 6$$

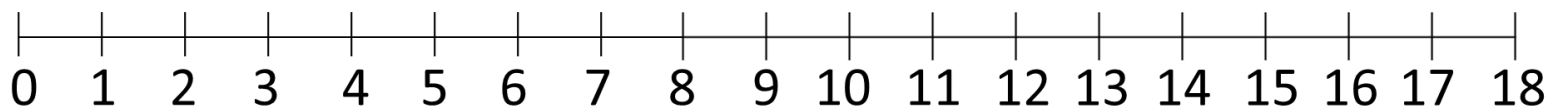
Have a think



6 jumps of 10 are equal to 60

$$18 \div \square = \square$$

Have a think



18 jumps of 1

$$18 \div 1 = 18$$

9 jumps of 2

$$18 \div 2 = 9$$

6 jumps of 3

$$18 \div 3 = 6$$

3 jumps of 6

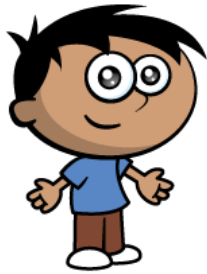
$$18 \div 6 = 3$$

2 jumps of 9

$$18 \div 9 = 2$$

1 jump of 18

$$18 \div 18 = 1$$



$$30 \div 1 = \square$$

Have a go



YOUR TURN

Have a go at the rest of
the questions on the
worksheet

