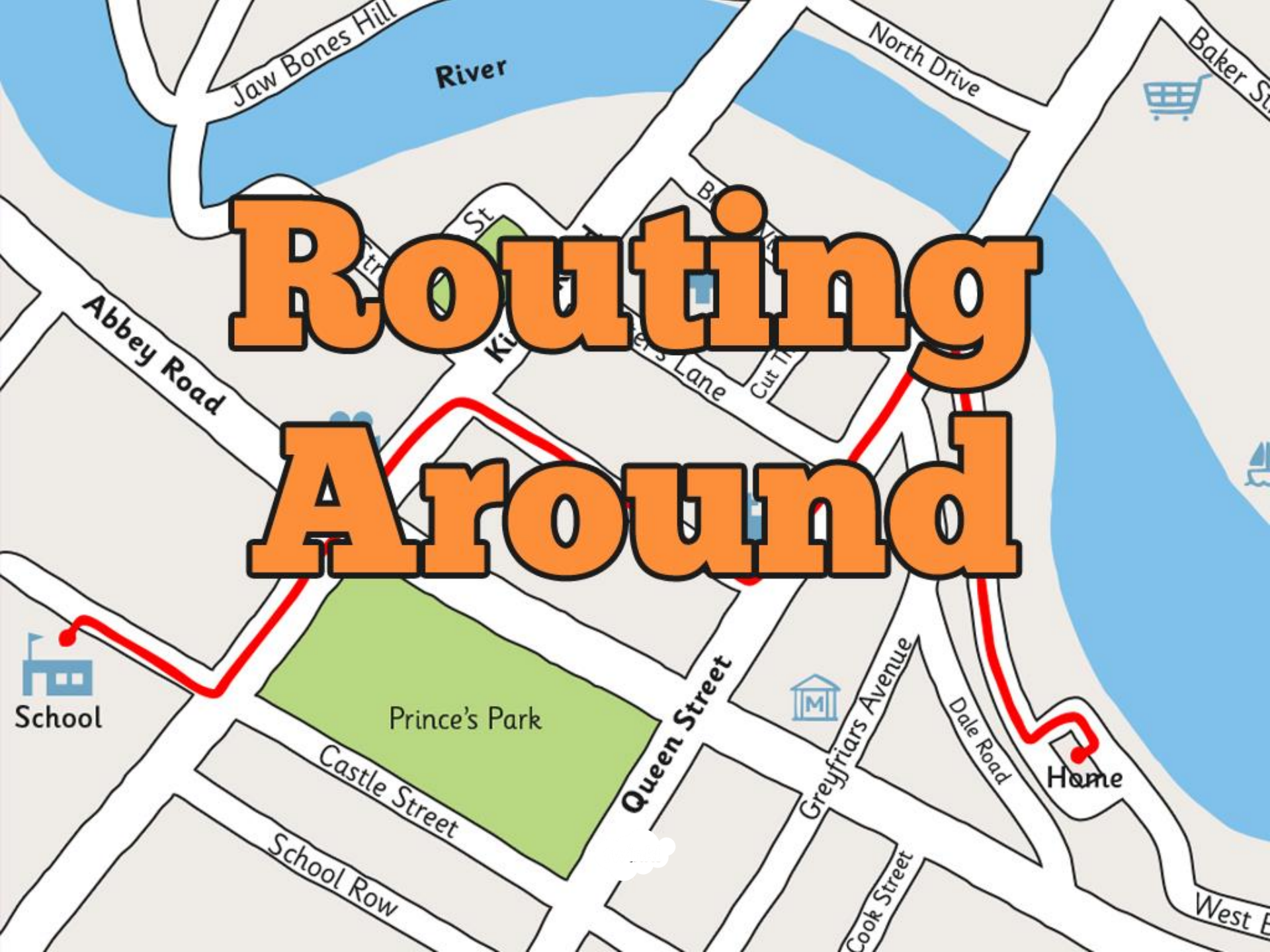




Geography

Magical Mapping

Routing Around





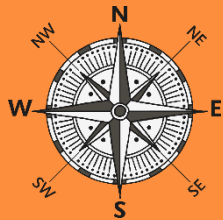
Aim

- I can use compass directions to move around a map.
- I can plan a route in the local area.

Success Criteria

- I can say the four points of a compass.
- I can use compass directions to describe how to move around a map.
- I can plan a simple route on a map of the local area using road, place names and a key.
- I can describe my route to a partner using compass directions.

Key Words



compass rose



direction



route



local area



near/far



distance



time



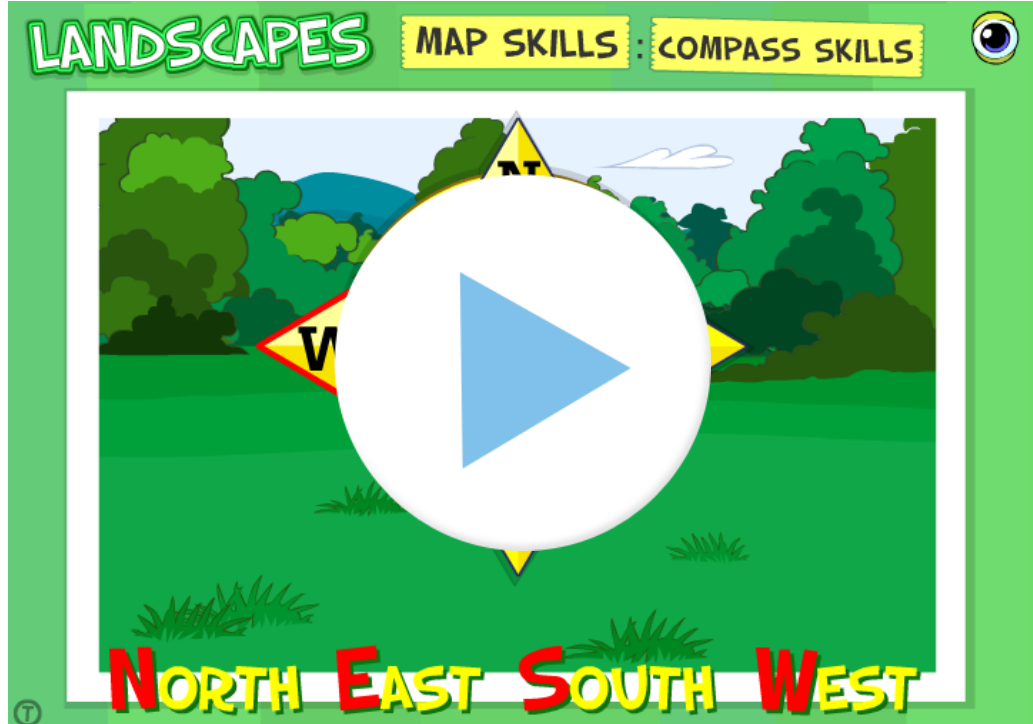
transport

North, East, South or West

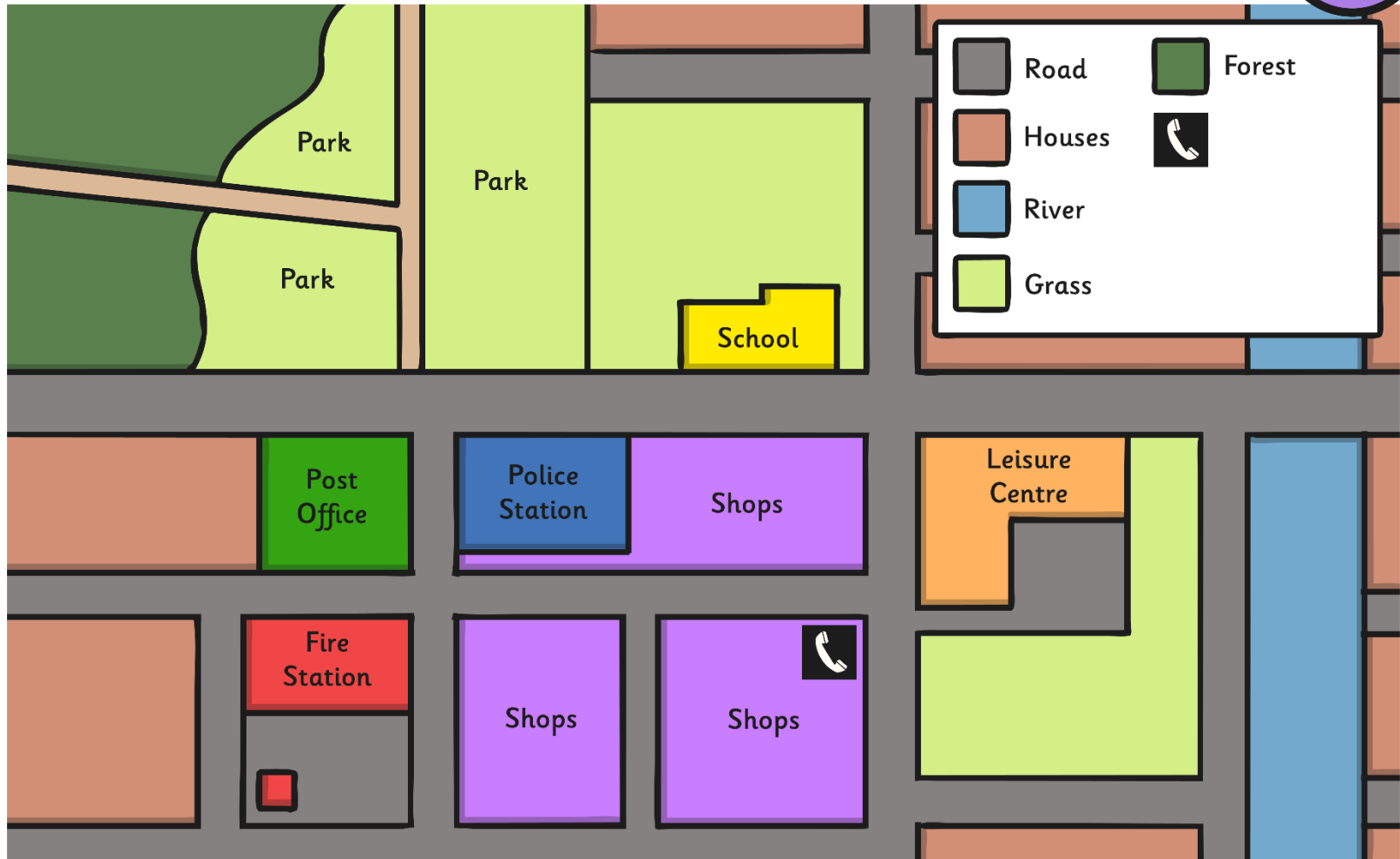
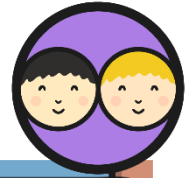


What can you remember about compass directions?

- What are the four points of a compass?
- What do we use a compass for?
- Who might use a compass?



Compass Challenge



Routing Around



What is a route?

What routes do you take?

Are these routes near or far?

Why do people plan a route?



What methods
of transport
might you
use?

Routing Around



Teacher: Insert your own map of the local area here...

Let's Plan a Route



Use your map to plan a route from the school to a place of interest in the local area.

Work together to draft a route, then use coloured pencils to highlight your route and add it to your key.



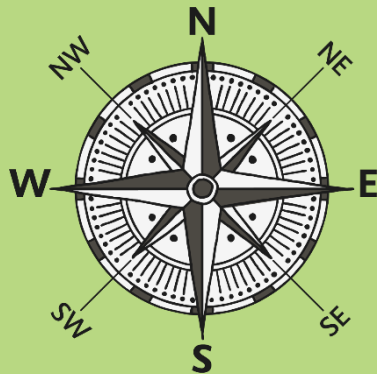
Challenge: Can you plan a different route to the same place?
Which route would you take if you were to travel by bus, bike or car?

Where Did We Go?



In groups, take it in turns to describe the routes you have planned.
When describing your routes, don't forget to use:

Compass directions



Road or street names



Places you may pass



Can you tell your group two good things you liked about their description of the route and one thing that could be improved next time?



Aim



- I can use compass directions to move around a map.
- I can plan a route in the local area.

Success Criteria

- I can say the four points of a compass.
- I can use compass directions to describe how to move around a map.
- I can plan a simple route on a map of the local area using road, place names and a key.
- I can describe my route to a partner using compass directions.

