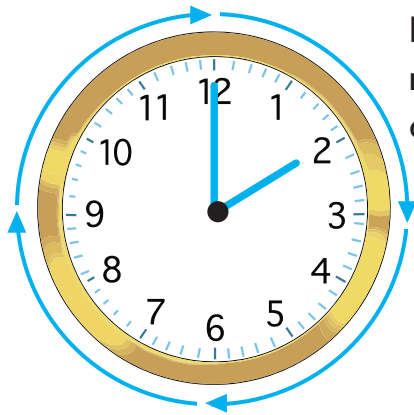
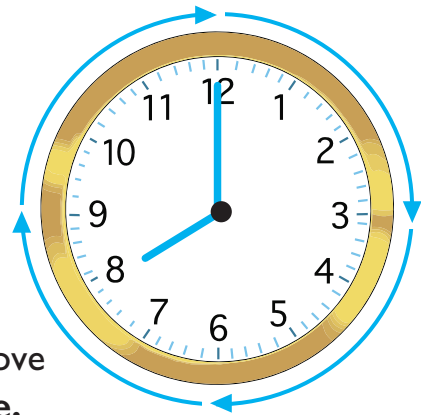


On the hour times



Hands always move in this direction.



Hands always move **clockwise**.

The big minute hand is at the top.

The little hour hand points to the hour.

Digital Time

2 : 00

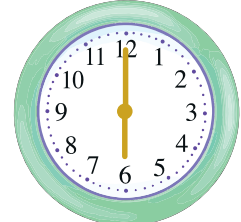
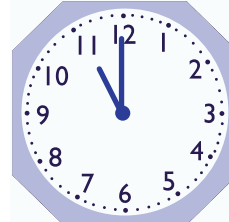
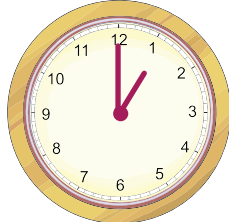
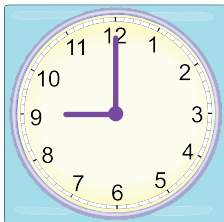
8 : 00

Word Time

2 o'clock

8 o'clock

1 Fill in the digital and word times for these clocks.



:

:

:

:

_____ o'clock

_____ o'clock

_____ o'clock

_____ o'clock

Use a real clock or watch at home and make the times relevant to your child by showing them the time on the clock when they go to bed, leave the house to go to school and so on.

2 Fill in the missing word times.

4 : 00

_____ o'clock

12 : 00

_____ o'clock

5 : 00

_____ o'clock

6 : 00

_____ o'clock

3 Fill in the missing digital times.

:

2 o'clock

:

10 o'clock

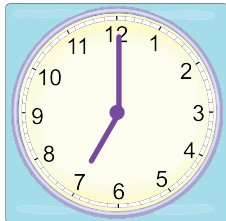
:

7 o'clock

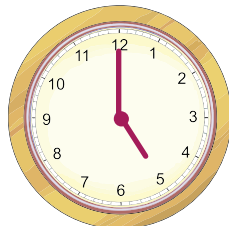
:

3 o'clock

4 Put these in time order and then use the letters under each clock to spell a mystery word. Start with 3 o'clock.



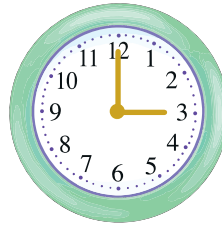
G



A



I



M

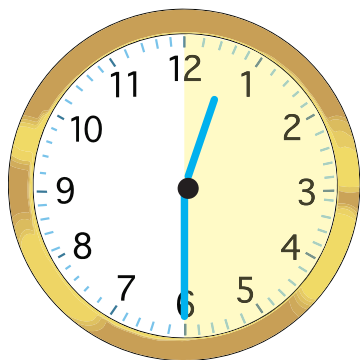


C

The word is _____.



Half past times



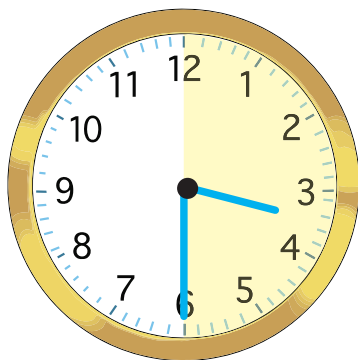
For a clock to show a **half past** time the big minute hand must travel halfway around the clock face, from the top to the bottom.

Digital Time

12 : 30

Word Time

half past 12

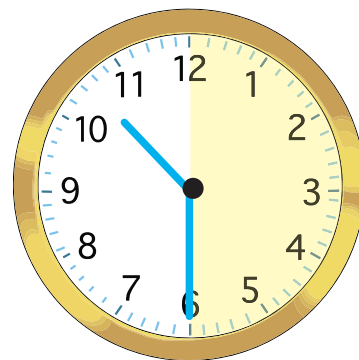


The big minute hand is at the bottom.

The little hour hand is halfway between 3 and 4.

3 : 30

half past 3



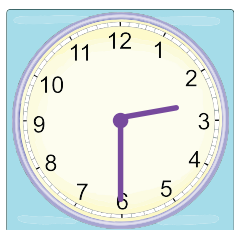
The big minute hand is at the bottom.

The little hour hand is halfway between 10 and 11.

10 : 30

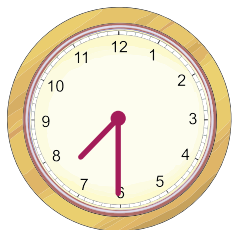
half past 10

1 Fill in the digital and word times for these clocks.



:

half past _____



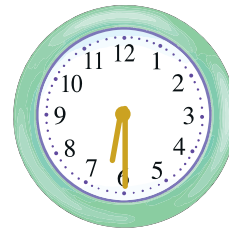
:

half past _____



:

half past _____



:

half past _____

Use a real clock and move the hand round from 4 o'clock to half past 4 and then on to 5 o'clock. Point out what happens to both hands when you do this. Show your child that as the big hand passes the bottom the little hand is halfway between the 4 and 5. Repeat this for other times.

2 Fill in the missing word times.

12 : 30

half past _____

1 : 30

half past _____

4 : 30

half past _____

8 : 30

half past _____

3 Fill in the missing digital times.

:

half past 9

:

half past 3

:

half past 11

:

half past 5

4 What time will it be one hour later than the time shown.

9 : 30

?

:

6 : 30

?

:

2 : 30

?

:

7 : 30

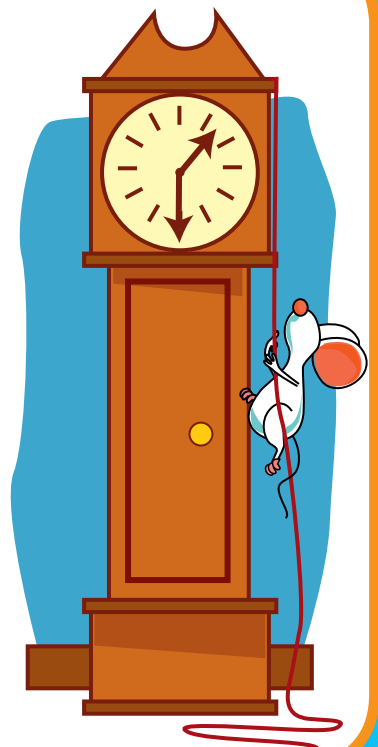
?

:

10 : 30

?

:



If your child is not confident with the concept of 'a half', get them to stand up and make a 'half turn' or cut a circle of paper into two halves.