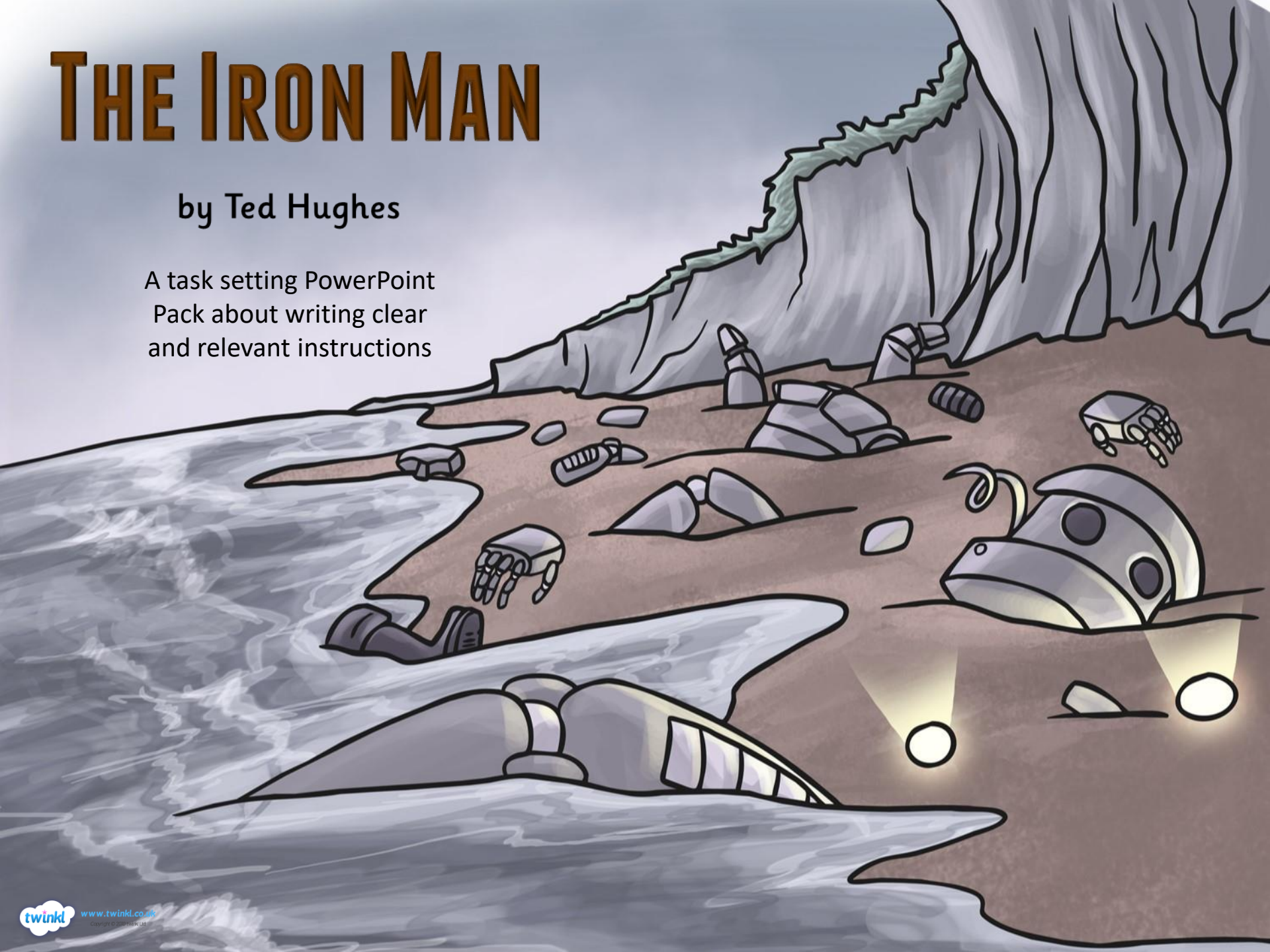


# THE IRON MAN

by Ted Hughes

A task setting PowerPoint  
Pack about writing clear  
and relevant instructions



# STARTER

L.O. To use imperative verbs to instruct.

In pairs, take it in turns to imagine you are the Iron Man, standing 'on the brink of the high cliff'.

It is your partner's job to prevent you from falling.

Photo courtesy of Elsie esq. (@flickr.com) - granted under creative commons licence - attribution

# STARTER

You must use imperative (bossy) verbs to give instructions to the Iron Man as he stands with his foot out into space...

Can you think of any examples?





# HELPFUL PHRASES

Phrases you might find helpful...

Lift your foot...

Place your foot...

Take one step...

Walk towards...

Turn to face...

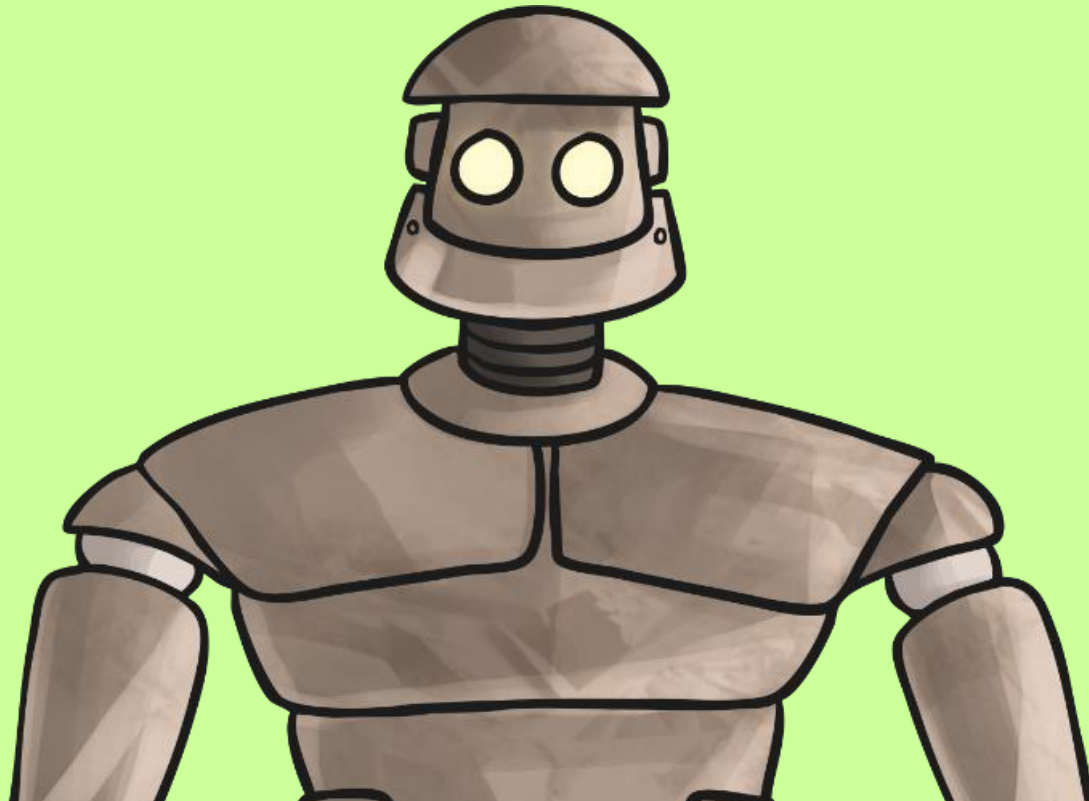
Move carefully...



**LO:** To write clear and relevant instructions.

**THINK, PAIR, SHARE...**

Can you think of a point in the story when clear instructions might be useful?



**LO:** To write clear and relevant instructions.

The Iron Man allowed himself to be taken to pieces, arms, legs, body, head, all separate, so each part could be flown out to Australia on a different airliner. He was too big to be flown out in one piece.'

Which chapter is this taken from and why does it happen?



**LO:** To write clear and relevant instructions.

The Iron Man is taken to pieces and flown to Australia in order to challenge the space-bat-angel-dragon to a test of strength.  
He has volunteered to be the 'champion of the earth'.

How do you think instructions might be useful at this point?



# YOUR TASK

Phrases you might find helpful...

## If you feel **QUITE** confident...

Write 10 numbered instructions to help the engineers fit the Iron Man back together. You can use the examples on the next page to help you.

## If you feel **confident...**

Write a set of clear and relevant instructions explaining exactly how to fit the Iron Man back together. Include a list of equipment needed and a labelled diagram.

## If you feel **VERY** confident...

Write a set of clear and relevant instructions explaining exactly how to fit the Iron Man back together.

Ensure you use ambitious time connectives.



# YOUR TASK

Can you sort these four instructions out?

**Clear and/ or  
Relevant**

**Unclear and/  
or Irrelevant**



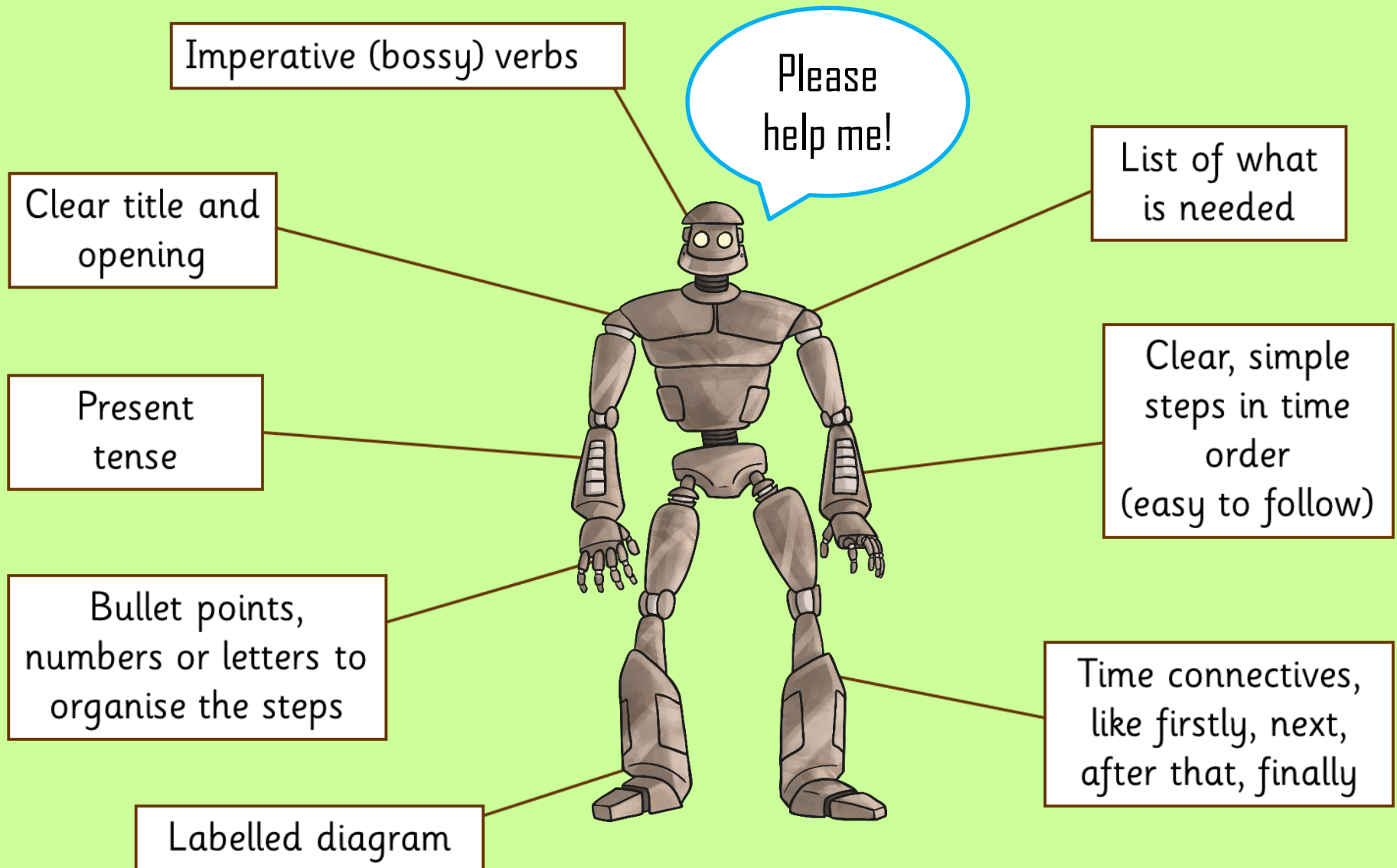
Attach the iron ears in a way that allows them to turn easily.

Watch out for the space-bat-angel-dragon!

Put the leg on.

Slot the left eye carefully into the left eye socket.

Instructions tell someone how to do or make something.  
What do we need to remember to include?



# PLENARY

**How easy are your instructions to follow?**

Read your instructions to a partner.

Their job is to use mime (acting) to try and follow your clear steps and put the Iron Man back together.

**Are the steps clear and relevant?**

**Give your partner 2 stars and a wish!**



THE END