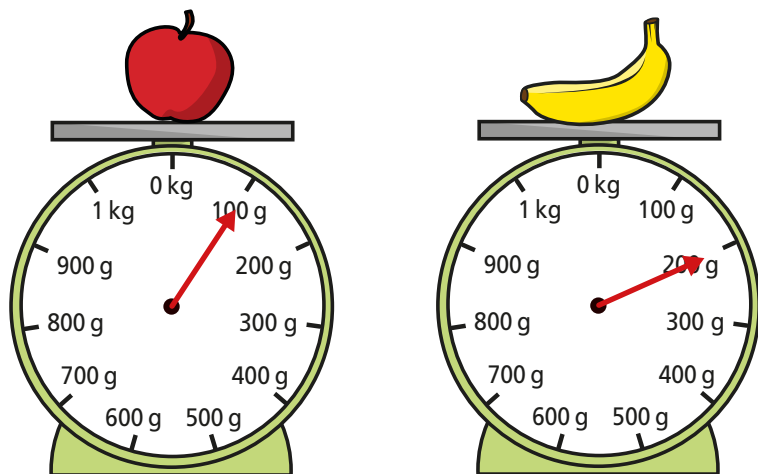
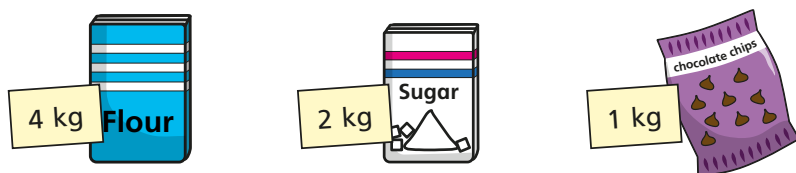


- 1 Teddy is measuring the weight of some fruit.



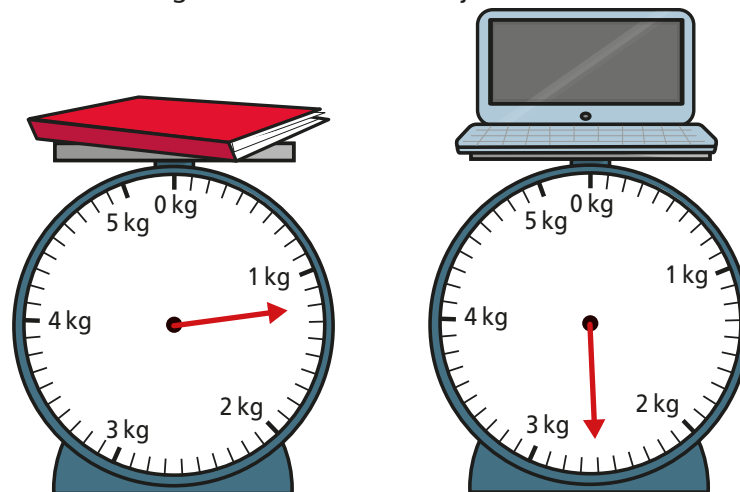
- What is the weight of the apple?
- What is the weight of the banana?
- Teddy puts both pieces of fruit on the same scale.  
What is the total weight of the apple and the banana?

- 2 Alex is measuring the weight of some ingredients.



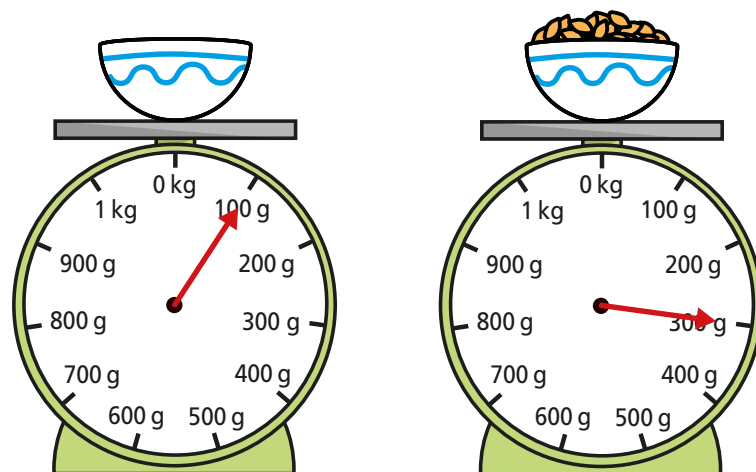
What is the total weight of the ingredients?

- 3 Ron is measuring the mass of some objects in the classroom.



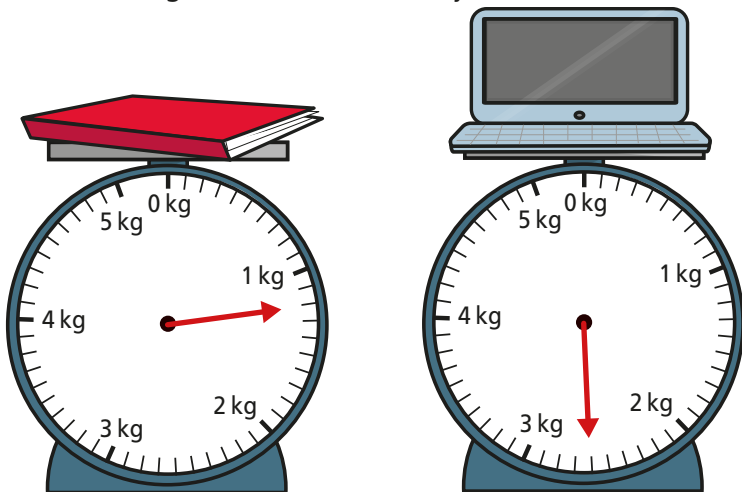
Ron puts both objects on the same scale.  
What is the total mass of the objects?

- 4 Aisha is weighing out some cereal.  
First she puts the bowl on the scales. Then she pours out some cereal.



What is the weight of the cereal in the bowl?

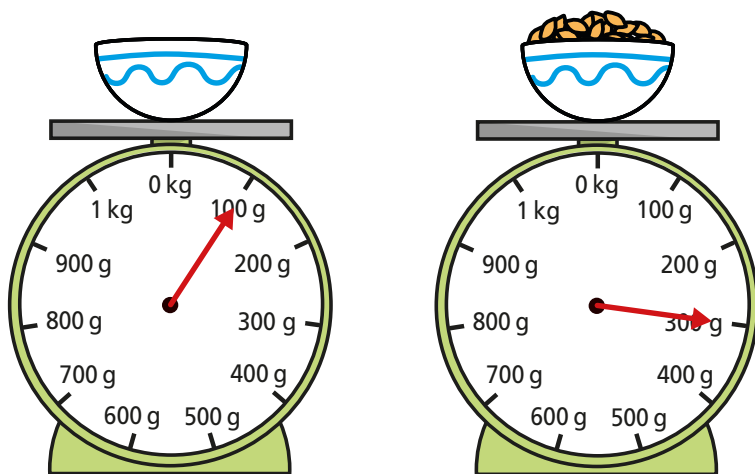
- 3 Ron is measuring the mass of some objects in the classroom.



Ron puts both objects on the same scale.  
What is the total mass of the objects?

- 4 Aisha is weighing out some cereal.

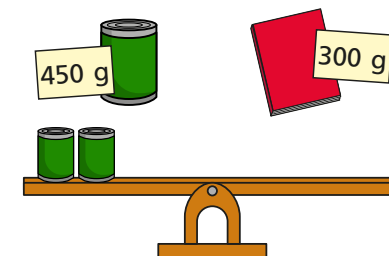
First she puts the bowl on the scales. Then she pours out some cereal.



What is the weight of the cereal in the bowl?

- 5 A dog weighs 8 kg and 200 g when it is 8 weeks old.  
The same dog weighs 12 kg and 900 g when it is 12 weeks old.  
What is the difference in the dog's weight between 8 and 12 weeks?

- 6 The mass of a tin is 450 g.  
The mass of a book is 300 g.  
Draw books on the scales to balance the tins.



- 7 Complete the number sentences.

- a)  $1 \text{ kg } 250 \text{ g} + 5 \text{ kg } 300 \text{ g} = \boxed{\phantom{00}} \text{ kg } \boxed{\phantom{00}} \text{ g}$   
 b)  $3 \text{ kg } 450 \text{ g} + 8 \text{ kg } 120 \text{ g} = \boxed{\phantom{00}} \text{ kg } \boxed{\phantom{00}} \text{ g}$   
 c)  $15 \text{ kg } 960 \text{ g} - 11 \text{ kg } 270 \text{ g} = \boxed{\phantom{00}} \text{ kg } \boxed{\phantom{00}} \text{ g}$   
 d)  $36 \text{ kg } 317 \text{ g} - 21 \text{ kg } 199 \text{ g} = \boxed{\phantom{00}} \text{ kg } \boxed{\phantom{00}} \text{ g}$   
 e)  $1 \text{ kg} - \boxed{\phantom{00}} \text{ g} = 200 \text{ g}$

- 8 Tommy and Rosie are working out the total weight of the box and the suitcase.

Tommy

The total weight is 5 kg and 1,200 g.

Rosie

The total weight is 6 kg and 200 g.

Who is correct? Talk about it with a partner.